

<http://www.heatpressvinyl.com/>

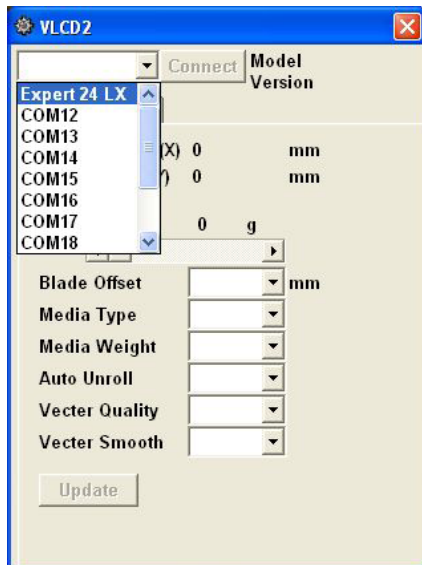
Gcc vinyl cutters, Winpcsign2010 pro Rhinestone Software, Sticky Flock, Bella Rhinestones

GCC Expert 24 LX Cutter Contour Cutting

With the machine turned off, load your media into the cutter, I make note of the measurements before hand and write them down, this just simplifies things later.

Once the machine is turned on it will read the size of the material.

Open VLCD



Choose Expert 24 LX then click Connect, this will load the information from the cutter. Set your blade force and other parameters you feel you need to change. Click update.

CLOSE VLCD AS THE CUTTER WILL

TURN THE CUTTER OFF AT THIS POINT

Open Great Cut, set your page size (Settings/Working Area)

Import your image or file



As seen on your computer screen but **it will not cut like this from the cutter.**



This Is how it will cut.

The distance from any crop marks must be 1” from the edge of the media for the optic eye to read it and cut it properly. Tape a piece of paper to the edges if you need more space.

To add a contour line and Registration/Crop marks,

Select your image by drawing a marquee line around it, go to Tools/Contour
Set your specifications, Click Calculate.

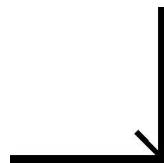
Re-select the image and the contour line with the marquee line, to to Tools/Set Jog Marks

Remember to keep the Jog Marks at least an inch from the edge of the media.

Select everything and print including crop marks and contour line.

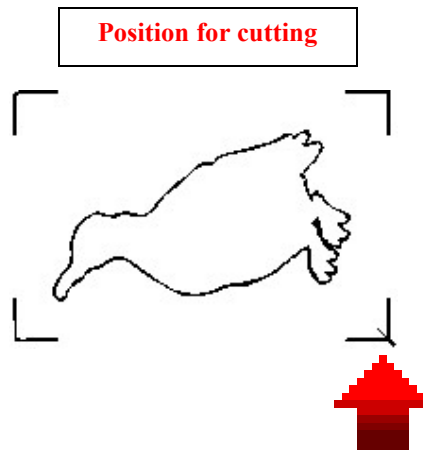
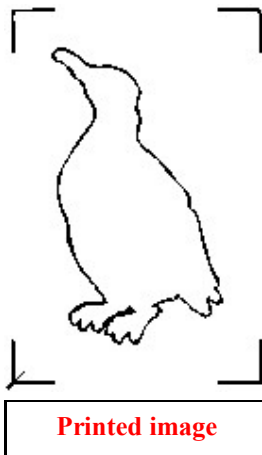
Delete the image but leave the contour line and the crop marks.

Load into cutter. You need to line up the crop mark that looks like this



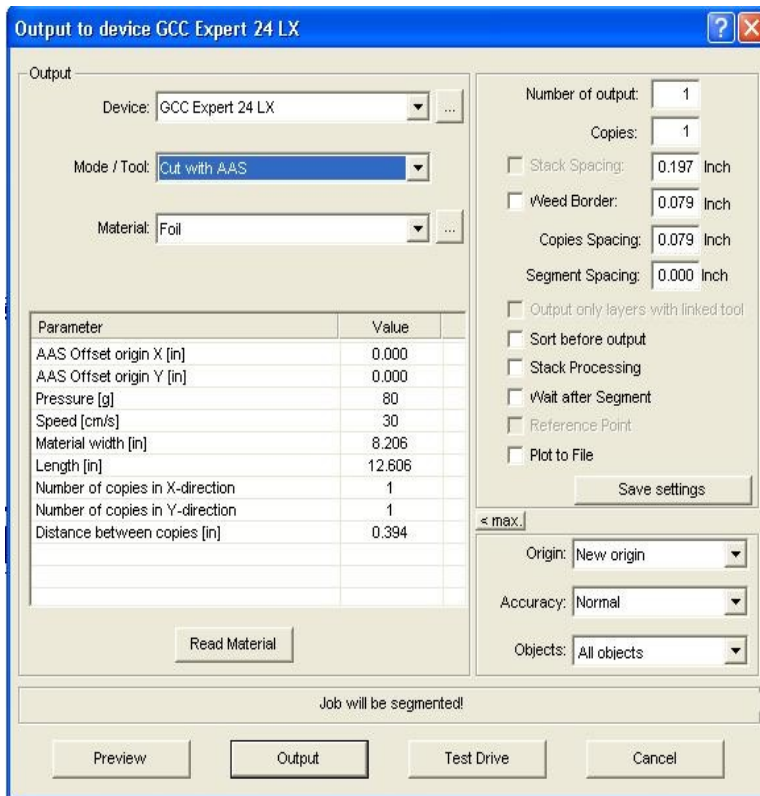
**THIS MUST BE IN THE RIGHT
HAND CORNER AT THE BOTTOM
ALMOST UNDER THE BLADE.**

Back in Great Cut, Select all the image with the marquee line, you will only have the contour line and the crop marks.



**THIS MUST BE IN THE RIGHT
HAND CORNER AT THE BOTTOM
ALMOST UNDER THE BLADE.**

Click on the icon that looks like a knife at the top of the Great Cut software or File/Output



Make sure it says Cut With AAS under Mode for contour cutting, change your material or add new presets to the right of material. I input my force or pressure and speed here again and my length and width of material.

Your media should be all ready to go, select Output and the cutter will move around and find the crop marks and cut the contour line.

Settings that have worked for me

Vinyl

VLCD blade force 80

Speed 60

**Mode- Cut

Heat press vinyl

VLCD blade force 120

Speed 60

**Mode-Cut

67 LB Paper with Cutting Matt

VLCD blade force 70

Speed 30

**Mode- Cut with ASC

Tips from others online

For cutting from Corel

Here's a good tip:

First make sure that you select your cutter under print setup. Next click on the shadow line on the right side of the page on your Corel screen. You now want to click on Get Page Size From Printer.

This will set up your screen according to your material width that was detected by your cutter.

You may still need to adjust your page length, but at least this will get you set up for the material width you have to work within.

Basic GCC cutting rules prior to cutting.

1. Select all – Arrange – Convert to Curves.
2. All outlines must be set to .001. While selected, Left Side Bar third up from the bottom, Outline Tool – First Icon (Outline Pen Dialogue F12) – set Width to .001 – OK
3. When printing...
 - a. Make sure there are no issues in the Pre Flight box on the top right of the print dialogue box.
 - b. Select Center Left 15 preset at the bottom. (I made a preset for our shop and saved it as Center Left 15)
 - c. Check your layout to make sure it is center left of the preview.
 - d. Load the vinyl and turn on the cutter. Make sure the rollers are in the “marked” locations on the cutter and as far to the edges as you can go and still have the rollers fully on the vinyl.
 - e. Perform a test cut. Change the pressure if needed in the VLCD.
 - f. Return the cutter blade to the correct cutting location and reset the origin point. Return the cutter to On Line.
 - g. Verify that there are no “lumps” in the vinyl. Sometimes I need to lift one roller or the other so I can flatten the vinyl.
 - h. Verify the vinyl is loaded correctly and the Origin Point is set at the far right of the vinyl and the vinyl is positioned in the cutter right.

OBJECT OUTLINES

1. OVERLAP WITH BOTH CUT
 - a. Create text/object
 - b. Select all
 - c. Arrange – Convert To Curves
 - d. Select and resize if needed
 - e. Select and center – Arrange – Align/Dist – Center Vertically
 - f. Select all – Arrange – Group
 - g. Outline – Effects – Contour – Outside - .125 or 1/8” (varies)
 - h. Arrange – Break Apart

- i. Effects – Select original – Contour – Inside - .08 (varies)
- j. View – Wireframe
- k. Take out mid cut and this will be your overlay color.

2. SIMPLE OVERLAP

- a. Create text/object
- b. Select all
- c. Arrange – Convert To Curves
- d. Select and resize if needed
- e. Select and center – Arrange – Align/Dist – Center Vertically
- f. Select all – Arrange – Group
- g. Outline – Effects – Contour – Outside - .125 or 1/8” (varies)
- h. Arrange – Break Apart
- i. Move and separate background from foreground
- j. Break Apart background and delete unwanted cuts so you have a solid background.

I had a similar issue with my VLCD. After I copied it to my desktop from the Accessories area of the installation CD and tried to double click it, I got an error about a USB???.dll that could not be found. The USB???.DLL is with the VLCD.EXE file in the Accessories area of the CD. I copied the .DLL file to my c:/windows/sysem32 where all the other .DLL files are. Then the VLCD worked and I could connect to the cutter and change settings. I still can not have Corel auto

Ruth told us that is when you use the VLCD. Change roll to single sheet. Bottom option I think.

The lower left of the work area in greatcuts is the right side of the cutter. Just imagine the left edge of the greatcuts work area as the front of your cutter.

Use the preview option when you click output. It will show you exactly where on the vinyl you are cutting, as well as the size of the vinyl.

<http://www.heatpressvinyl.com/>

Gcc vinyl cutters, Winpcsign2010 pro Rhinestone Software, Sticky Flock, Bella Rhinestones